

# Descendants of William Ducksbury 1785

11 Oct 2009

Page 1

## William Ducksbury (b.Ab. 1785-Penwortham;d.9 Jun 1855-Kendal)

sp: Sarah Atkinson Dacre (b.18 Oct 1789-Crosthwaite,Westmorland;m.2 Aug 1813;d.9 Apr 1858-Kendal)

— James Ducksbury (b.26 Dec 1813-Kendal;d.22 Jun 1868-Kendal)

sp: Margaret (b.Ab. 1814;m.Bef 1833;d.18 Dec 1843-Kendal,Westmorland)

Sarah traces back to Christopher Dacre ~1660

— William Ducksbury (c.21 Jul 1833-Kendal,Westmorland,England;d.14 Feb 1836-Kendal)

sp: UNKNOWN

— John Ducksbury (b.13 Aug 1835-Kendal;d.25 May 1869-80 Langsdale Street,Liverpool)

sp: Selina Robinson (b.1833/1834-Shap,Westmorland;m.11 Nov 1858)

— Margaret Ducksbury (b.1859)

— James Simpson Ducksbury (b.Dec 1860-West Derby,Liverpool)

— Henry Duckberry (b.Ab. 1862-West Derby,Liverpool;d.Dec 1922-Unanderra,NSW,Australia)

sp: Mary Scott (b.20 May 1860-Myselburgh,Scotland;m.21 Mar 1891;d.25 Mar 1955-Wollongong,NSW)

— James Simpson Ducksbury (b.Ab. 1893;d.30 Apr 1918-The Somme,France)

— Thomas Arnold Duxbury (b.20 Oct 1897-Central Kembla,NSW;d.5 Jun 1960-Wollongong,NSW)

sp: Mabel Louisa Rodgers (b.2 Jun 1900-Springfield Figtree,NSW;m.23 Oct 1920;d.16 Dec 1989)

— Ina Mabel Ducksbury (b.17 Aug 1922)

sp: Basil Irons (m.25 Sep 1943)

— Terence Irons (b.23 May 1946)

sp: Corrine Armstrong (b.29 Jul 1949;m.1 Oct 1966)

— Toni Anne Irons (b.22 Feb 1967)

— John Paul Irons (b.5 Apr 1971)

— Joanne Irons (b.2 Jan 1977)

— Jeffrey Irons (b.29 May 1950)

sp: Daniella Pinder (b.1 Apr 1952;m.11 Oct 1969)

— Kim Marie Irons (b.30 Apr 1969)

— Michael Jeffrey Irons (b.29 Jan 1971)

— Jacqueline Anne Irons (b.12 May 1973)

— Peter Irons (b.30 Oct 1954)

— Alan Arnold Ducksbury (b.22 Feb 1936-Unanderra,NSW)

sp: Beryl Maud Winley (b.16 May 1934-Haberfield,NSW;m.28 Dec 1957)

— Graeme Ducksbury (b.26 May 1959-Wollongong,NSW)

sp: Katherine Martyne Baxter (b.19 Oct 1972-Goulburn,NSW;m.16 Oct 1993)

— Shane Ducksbury (b.9 Feb 1995-Goulburn,NSW)

— Abigayle Ducksbury (b.10 Jan 1997-Goulburn,NSW)

— Cecily Ducksbury (b.28 Aug 1998-Goulburn,NSW)

— Lloyd Ducksbury (b.21 Jul 2001)

— Alana Ducksbury (b.23 Aug 2004)

— Susan Ducksbury (b.11 Dec 1961-Wollongong,NSW)

sp: Brian Victor Keith Jones (b.20 Jan 1953-Goulburn,NSW)

— Alma Ducksbury (b.1905;d.8 Jul 1943)

sp: John William Jolliffe

— John Edward (Jack) Jolliffe

sp: Norma Upward

— David Jolliffe (b.1952)

— Christopher Jolliffe (b.1955)

# Descendants of William Dicksbury 1785

- Una Margaret Dicksbury (b.1911;d.26 Mar 1935)
- John Dicksbury (b.1911;d.1 Jun 1948)
- Elva Dicksbury (d.3 Oct 1984)
- Ena Dicksbury (d.31 Aug 1965)
  - sp: Stan Cochrane
- Henry Dicksbury
- Richard H Dicksbury (b.1895-Wollongong;d.9 Oct 1916)



'Elephant Inn' Pub, Stricklandgate, Kendal

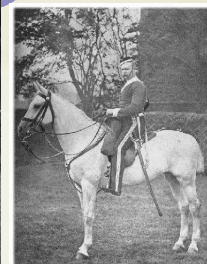


Westmoreland & Cumberland Yeomanry Cavalry, ~1870s

- James Dicksbury (b.1837;d.29 Dec 1839-Kendal)
- Samuel Dicksbury (b.1839-Kendal)
  - sp: Agnes Bindless (b.1833;m.17 Oct 1858)
- sp: Jane Richardson (b.Feb 1827-Kendal;m.1844/1850)
- William Richardson Dicksbury (b.24 Feb 1850-Kendal)

Old Fellside

John is Buried with Elizabeth Unsworth who died 4 Jan 1886 aged 39 while Jane remarried to Thomas Unsworth 1869



- William Dicksbury (b.13 May 1815-Kendal;d.9 Mar 1893-Kendal)
- sp: Isabella Berry (b.1814-Hutton Roof,Westmoreland;d.1857-Kendal)

- John Dicksbury (b.22 Jul 1836-Kendal;d.26 Jun 1859-Kendal)
- sp: Jane Cockroft (c.19 Jul 1835-Kendal;m.16 Nov 1856;d.5 Dec 1886-Kendal)

- William Dicksbury (b.26 Aug 1857-Kendal;d.5 Apr 1930-Liverpool)
- sp: Catherine Byrnes (b.1851-Ulverston;m.26 Apr 1882;d.26 Apr 1900-Kirkdale,Liverpool)
- sp: Annie Lamb (b.12 Jan 1873-Court House,FS,Liverpool;m.27 Apr 1901;d.26 Mar 1952-85 Victoria Rd,G,Liverpool)

- Mary Dicksbury (b.8 Oct 1902-West Derby,Liverpool;d.26 Apr 1903)
- William Henry Dicksbury (b.21 Jul 1904-West Derby,Liverpool;d.Apr 1967-Walton,Liverpool)
- sp: Elizabeth Cookson (b.9 Oct 1916-Liverpool;d.21 Jul 1997-Great Crosby,Liverpool)

- Anne Dicksbury (b.21 Apr 1947-Liverpool)
- sp: Julian Smith (m.(Div))

- Gillian Smith (b.24 Jan 1971-Waterloo)
- sp: James Murphy
- Jonathan Smith (b.14 May 1989)
- Abigail Murphy (b.3 Aug 1996)
- Jack Murphy (b.5 Mar 1998)

- Peter Smith (b.12 Jun 1972-Waterloo)
- sp: UNKNOWN
- Lewis Smith (b.14 Mar 2006-Liverpool)

- Kathryn Smith (b.11 Jul 1973-Waterloo)
- sp: David Hulme
- Rebecca (b.19 Dec 1993-Liverpool)
- Calllum (b.21 Nov 1997-Liverpool)
- Fraser Hulme (b.17 May 2001-Liverpool)

- Paul Gerard Dicksbury (b.8 Apr 1958-Liverpool)
- sp: Amanda Carole Birtwistle (b.16 May 1963;m.29 Oct 1988)

- Charles Dicksbury (b.11 Feb 1906-West Derby,Liverpool;d.1993-Formby,Liverpool)
- Mary Isobel Dicksbury (b.22 Aug 1907-West Derby,Liverpool;d.8 Sep 1981-Formby,Liverpool)
- Arthur Dicksbury (b.Jul 1910-Seaforth,Liverpool;d.16 Dec 1910-Seaforth,Liverpool)
- Florence Dicksbury (b.3 Jul 1913-West Derby,Liverpool;d.Died as child)

- Henry Cockroft Dicksbury (b.Dec 1858-Kendal;d.27 Mar 1859-Kendal)

- Sarah Dicksbury (b.7 Oct 1838-Scalthwaitrigg,Kendal)



# Descendants of William Ducksbury 1785

11 Oct 2009

Page 3

sp: James Clark (m.7 Aug 1865)

— William Ducksbury (b.9 Oct 1840-Kendal;d.11 Oct 1840-Kendal)

— Ellen Ducksbury (b.Mar 1842-Scalthwaitrigg,Kendal)

— Mary Ann Ducksbury (b.May 1844-Kendal;d.14 Aug 1845-Kendal)

— William Ducksbury (b.3 Jul 1846-Far Croft Bank,Kendal)

sp: Ellen Atkinson (b.1835;m.6 May 1872;d.Bef 1901)

— Isabella Ducksbury (b.1874-Arkholme,Lancaster)

sp: John Clarke (b.1873-Barlestone,Leicester)

— Frank Clarke (b.1896-Arkholme)

— Eleanor Clarke (b.1899-Giggleswick,West Yorkshire)

Farmer at Arkholme Lancaster 1901

— Walter Ducksbury (b.1876-Arkholme,Lancaster)

sp: Minnie Stacey (b.1881;m.1906;d.1916-Ecclesall Bierlow)

— William Stuart Ducksbury (b.23 Jul 1908-Ecclesall Bierlow;d.Apr 1990-Barnsley)

sp: Marian Smith (m.Dec 1935)

— Yvonne M Ducksbury (b.Mar 1939-Sheffield)

— Walter Ducksbury (b.9 Oct 1914-Ecclesall;d.Apr 1993-Chesterfield)

— Jane Ducksbury (b.14 Sep 1849-Kendal)

sp: John Winder (b.1848-Kendal;m.21 Jul 1870;d.Aft 1898-Kendal)

— Sara H Winder (b.1871-Kendal)

— Thomas Winder (b.16 Dec 1873-Kendal;d.4 Feb 1952-Stockport)

sp: Constance Helena Witfield (b.26 Jul 1868-Liverpool;m.20 Nov 1898;d.18 Dec 1943-Stockport)

— John Witfield Winder (b.12 Apr 1899-Stockport;d.19 Jan 1974-Stockport)

sp: Annie Hardy (b.1 Oct 1911-Stockport;m.17 Apr 1933;d.10 Aug 1983-Poynton,Cheshire)

— Constance Helena Winder (b.18 May 1900-Stockport;d.3 Dec 1986-Stockport)

sp: William Edward Lees (b.10 Feb 1892-Stockport;m.4 Sep 1924)

— Thomas Duxbury Winder (b.20 Jul 1901;d.27 Feb 1974)

sp: Edith Kay (b.12 Sep 1903;m.1927;d.11 Jan 1979)

— Arthur Monkhouse Winder (b.1902-Stockport;d.1903-Stockport)

— Samuel Winder (b.1903/1904;d.1974)

sp: Edith

— Marjorie May Winder (b.26 Jun 1905;d.Mar 1974)

sp: Isabella Burgess (m.1950)

— Frederick Winder (b.1875-Kendal)

— Maria E Winder (b.1877-Kendal)

— John W Winder (b.1879-Kendal)

— Mary A Winder (b.1881-Kendal)

— Edith Winder (b.1886-Kendal)

— Hannah Winder (b.1886-Kendal)

— Herbert Ducksbury Winder (b.1888-Kendal)

— Samuel C Winder (b.1892)

Living at 65 Lune Street, Lancaster 1881

— Samuel Ducksbury (b.1852-Kendal;d.Sep 1890-Lancaster)

sp: Annie Evans (b.1849-Kendal;m.23 Dec 1871)

— John William Ducksbury (b.8 Jan 1872-Kendal,Westmorland;d.28 Dec 1951-Los Angeles,CA,USA)

sp: Theresa Hartley (b.17 Jan 1869-Warton;m.1899;d.19 Mar 1947-Los Angeles)

— Mabel Ducksbury (b.Jun 1900-Lancaster)

Appears to have emigrated to America, Died in Los Angeles

# Descendants of William Ducksbury 1785

11 Oct 2009

Page 4

- └ Evelyn Theresa Ducksbury (b.1904-Lancaster)
- └ Frances Ducksbury (b.26 Jan 1874-Kendal;d.Dec 1892-Lancaster)
- └ Alfred Ducksbury (b.1877-Lancaster)
  - sp: Isabella Gibson (b.1874-Ireland;m.15 Feb 1898)
  - └ Lily Ducksbury (b.18 Apr 1898-Lancaster;d.Jun 1898-Lancaster)
  - └ Violet Ducksbury (b.18 Apr 1898-Lancaster;d.1899-Lancaster)
  - └ Annie Ducksbury (b.20 Jun 1901-Lancaster)
- └ Charles Ducksbury (b.1879-Lancaster)
  - sp: Margaret Airey (b.1836-Kendal;m.7 Aug 1865;d.1898-Kendal)
  - └ John Ducksbury (b.5 Sep 1865-Kendal;d.1904-Kendal)
    - sp: Sarah-Ann Robinson (b.1866-Kendal)
    - └ John William Ducksbury (b.24 Jun 1895-Kendal;d.12 Oct 1916-The Somme,France)
  - └ Elizabeth Ducksbury (b.1867-kendal;d.1890-Kendal)
    - sp: William Tyson (b.1858;m.26 Dec 1887)
- └ John Ducksbury (b.6 Jan 1817-Kendal,Westmorland,England;d.20 Oct 1867-Kendal (Kirkland)) [in Kings Liverpool Regiment](#)
  - sp: Elizabeth Rogerson (b.1815-Kendal;m.6 Jan 1844;d.1885-Kendal)
  - └ Isabella Ducksbury (b.26 Nov 1844-Cross Bank,Scalthwaitrigg;d.1892-Kendal)
    - sp: William Berwick (b.1849;m.5 Sep 1870)
    - └ John William Berwick (b.1871-Kendal)
      - sp: Mary Davis (b.1869-Kendal;m.1895)
    - └ Charles Ducksbury Berwick (b.1873-Kendal)
      - sp: Selina Rigg (b.1871-Oakbank;m.1895)
      - └ Nora Berwick (b.1897-Kendal)
      - └ Clarice Berwick (b.1901-Kendal)
    - └ Ann Elizabeth Berwick (b.1875-Ulverston)
    - └ Albert Ernest Berwick (b.1878-Ulverston)
    - └ Maud Isabella Berwick (b.1881-Kendal)
    - └ Susannah Berwick (b.1884-Kendal)
    - └ Harry Berwick (b.1888-Kendal)
  - └ Henry Ducksbury (b.28 Jan 1847-Crossbank,Scalthwaitrigg,Kendal;d.6 Feb 1904-Kendal)
    - sp: Sarah Dent (b.22 Jul 1842-kendal;m.Jun 1869;d.1 Sep 1914)
    - └ Mary Elizabeth Ducksbury (b.1870-kendal)
    - └ Sarah Ann Ducksbury (b.1872-kendal)
      - sp: Charles Leather (b.1875-Kendal;m.1899)
      - └ Herbert Leather (b.1901-Kendal)
    - └ Henry Ducksbury (b.1874-kendal;d.25 Sep 1918-Kendal)
      - sp: Selina Oldcorn (b.1874-Kendal;m.26 Dec 1898;d.7 Dec 1912-Kendal)
      - └ Henry Albert Ducksbury (b.1900-Manchester)
        - sp: Edith A Allen (m.Sep 1935)
      - └ Basil Ducksbury (b.Dec 1901-Prestwich;d.Dec 1901-Prestwich)
      - └ James Ducksbury (b.24 Feb 1903-Prestwich;d.Mar 1984-Kendal)
        - sp: Annie Heapy (m.Sep 1924)
    - └ Maria Ducksbury (b.1876-kendal)
      - sp: unknown (m.1904)
    - └ John Ducksbury (b.1878-kendal;d.1958)



# Descendants of William Ducksbury 1785

11 Oct 2009

Page 5

- sp: Clara Leather (m.1901)
  - Gilbert Ducksbury (b.Dec 1901-Kendal;d.1970)
    - sp: Edith Mackereth (m.Jun 1928)
      - Derek A Ducksbury (b.Dec 1928-Kendal)
        - sp: Murial
  - Florence Ducksbury (b.1904-Kendal;d.1986)
    - sp: UNKNOWN
      - Sheila
      - Joyce
  - Gladys Ducksbury (b.Jun 1905-Kendal;d.1995)
    - sp: UNKNOWN
      - Jean
      - Keith
  - Evelyn Ducksbury (b.Dec 1906-Kendal;d.1909-Kendal)
  - Harold Ducksbury (b.Jun 1909-Kendal;d.1975)
    - sp: Elsie Harriman (b.25 Mar 1913-Kendal;d.Jul 1989-Kendal)
      - Neil Ducksbury (b.Mar 1932-Kendal;d.May 2004-Kawerau,New Zealand)
        - sp: Katheline
          - Shiela Ducksbury
          - Gavin Ducksbury
          - Christine Ducksbury
          - Keith Ducksbury
        - Ian Ducksbury (b.1935-Kendal)
          - sp: Janet Bruin (m.1974)
            - Michael Ducksbury (b.24 Dec 1975-Kendal)
              - sp: Tracey Ham (m.16 Mar 2007)
    - Agnes Ducksbury (b.Nov 1910-Kendal;d.1972)
      - sp: Swidenbank (m.Sep 1933)
        - Audrey
        - Raymond
    - Majorie Ducksbury (b.Mar 1912-Kendal;d.Sep 1914-Kendal)
    - Alan Ducksbury (b.16 Feb 1915-Kendal;d.Aug 1991-Lancaster)
      - sp: Hilda Pratt (b.21 Mar 1923-Stanhope,Co. Durham;d.Jan 1996-Kendal)
        - Douglas Ducksbury (b.1943-Kendal)
        - John Ducksbury (b.1945-Kendal)
        - Ann Ducksbury (b.1947-Kendal)
    - James Nelson Ducksbury (b.7 Oct 1881-Kendal,Westmorland)
      - sp: Priscilla Ellis (b.1882;m.Bef 1904)
        - Henry Ducksbury (b.15 Jul 1904-Kendal)
        - John Stanley Ducksbury (b.27 Jan 1907-Kendal;d.1960-Kendal)
          - sp: Margaret Johnson (b.5 Apr 1909-Kendal;m.Jun 1933;d.Aug 1984-Kendal)
    - Ellen Ducksbury (b.1884-Kendal)
      - sp: Charles Henry Bishop (b.1888-Kendal;m.1910)
    - Catherine Ducksbury (b.1887-Kendal)
      - sp: Edmund Benson (m.Sep 1929)

# Descendants of William Ducksbury 1785

- Charles Ducksbury (b.1890-Kendal;d.28 Sep 1918-Havrincourt,France (WW1))
  - sp: Elizabeth
- William Ducksbury (b.1892-Kendal)
  - sp: Mary M Parkin (m.Dec 1922)
    - Kenneth C Ducksbury (b.Sep 1923-Kendal)
    - Helen Ducksbury (b.Jun 1925-Kendal;d.Sep 1925-Kendal)
    - Brian Ducksbury (b.Sep 1929-Kendal)
- Frank Ducksbury (b.1908-Kendal)
- Charles Ducksbury (b.1849-Kendal;d.18 Sep 1863-Kendal)
- Sarah A Ducksbury (b.1852-Kendal;d.1920-Kendal)
- George Nelson Ducksbury (b.6 Mar 1855-Kendal;d.27 Mar 1918-Kendal)
  - sp: Ellen Fletcher Hardcastle (b.1859-York;m.1877;d.Jun 1898-Kendal)
    - Jane Elizabeth Ducksbury (b.1878-kendal)
      - sp: Joseph Shepperd (m.Sep 1908)
        - Eleanor Shepperd (b.1911-Kendal)
    - John Henry Ducksbury (b.1880-kendal;d.24 Dec 1919-Freemantle,Perth,Australia)
      - sp: Blanche Ellen (b.1880-London;m.1900)
        - Monica Ducksbury (b.1902-London,Paddington)
        - Alfred Nelson Ducksbury (b.1905-Kilburn)
        - Edith Mildred Ducksbury (b.1907-Kilburn)
        - Kathleen Ducksbury (b.1908-Kilburn)
        - John William Ducksbury (b.23 Jul 1909-Kilburn;d.Apr 1994-Colchester)
          - sp: Jeanette Matilda (b.14 Feb 1904;d.Jul 1998)
        - Arthur Joseph Ducksbury (b.20 Jan 1911-Kilburn;d.Dec 1990-Petersfield,Hampshire)
          - sp: Flavin
            - Sheila K Ducksbury (b.1934)
  - Charles Cuthbert Ducksbury (b.21 Apr 1883-Nethergraveship,Kendal;d.Bef 1910)
    - sp: Amy Jarvis (m.24 Sep 1903)
      - John Ducksbury (b.22 Jun 1904-Kendal)
      - Charles Jarvis Ducksbury (b.22 Oct 1906-Kendal)
        - sp: Florence
  - Edith Mary Ducksbury (b.10 May 1885-Kendal)
    - sp: Stephen Downham (b.Mar 1884-Kendal;m.1911)
  - Francis Eleanor Ducksbury (b.1887-Kendal)
    - sp: Thomas Byers (m.Sep 1915)
  - Bernard Ducksbury (b.1890-Kendal)
    - sp: Isabell Brown (m.Dec 1911)
      - Edith M Ducksbury (b.Jun 1912-Kendal)
      - Doris Ducksbury (b.Jun 1913-Kendal;d.Jun 1913-Kendal)
      - Christina I Ducksbury (b.Sep 1914-Kendal)
      - Elsie I Ducksbury (b.Sep 1919-Kendal)
  - Winifred Ducksbury (b.7 Feb 1893-Nethergraveship,Kendal)
    - sp: Marshall (m.Mar 1917)
  - Nellie Ducksbury (b.1904-London)
  - Mary Ann Ducksbury (b.28 Feb 1819-Kendal,Westmorland,England;d.24 Jul 1890-Kendal)

5<sup>th</sup> Btn Duke of Wellingtons (West Riding) Regiment.  
Lived at 62, Morcambe St., Rocky Lane, Liverpool

Served over 8 years in Scott's Guards, then in the Australian Army before being invalided out and dying of TB in Perth, WA.



Emigrated to America at the age of 25 sailing on the SS Baltic from Liverpool arriving at Ellis Island on 3-April-1911. According to the ships manifest she was 5 foot 5 with dark complexion, dark brown hair and grey eyes and had \$25 in cash on her arrival. She was travelling to meet her fiancee Stephen Downham who had paid her fare and was living at 144 Shaws Av, Keesport PA. Stephen had travelled out from Kendal in 1910 with \$400. Also on the Ships Manifest the next entry to Edith is Sara Downham age 25 from Kendal who was Stephens brother.

# Descendants of William Ducksbury 1785

11 Oct 2009

Page 7

- sp: Joseph Marr (b.21 May 1807-Kendal;m.28 Nov 1863;d.22 Jan 1872-Kendal)
- sp: William James Buck (b.1804-Whittlesea,Cambridge;m.1880;d.1881)
- Alice Ducksbury (b.20 Jan 1821-Scalithwaiterigg,Westmorland;d.7 Oct 1864-Kendal)
  - sp: Samuel Milcrest (b.15 Mar 1818-Kendal;m.27 Dec 1852;d.Aft 1864)
    - William Milcrest (b.15 Jan 1857-Kendal;d.28 Feb 1935-Keswick)
      - sp: Mary Ann Marshall (b.Jun 1860-Askham;m.17 Nov 1883;d.16 Jan 1949-Keswick)
        - Alice Milcrest (b.22 Sep 1884-Askham;d.16 Dec 1967)
        - Mary Milcrest (b.17 Apr 1887-Kendal;d.30 Oct 1954)
        - Hellen Milcrest (b.4 May 1890-Penrith;d.3 Jul 1970)
        - Dorothy Milcrest (b.8 Jun 1893-Patterdale)
          - sp: Henry Whitaker Garnet
            - Henry Milcrest Garnet (b.8 Oct 1924)
            - Dorothy Clare Garnet (b.1931)
        - Samuel Marshall Milcrest (b.12 Apr 1897-Patterdale;d.13 Nov 1910-Patterdale)
        - Kathleen Milcrest (b.9 Apr 1902-Patterdale;d.21 Jan 1986-New Zealand)
          - sp: Stanley James Pears (b.27 May 1899-Penrith;m.25 Feb 1933)
            - Ian Milcrest Pears (b.24 Feb 1934-Kirkoswald)
              - sp: Judith Isobel Floyer Wickes (b.9 Sep 1931-Wellington,NZL;m.25 Oct 1958)
                - David Mathew Pears (b.22 Jul 1965-Wellington,NZL)
                  - sp: Angela Heather Brown (b.10 Feb 1969-Poole;m.23 Feb 1991)
                - Sally Elizabeth Pears (b.20 Jul 1967-Wellington,NZL)
                  - sp: William James Lawson Stone (b.23 Apr 1963-Palmerston North,NZL;m.26 Mar 1994)
                    - Ran the Milcrest Hotel in Glenridding
  - Sarah Ducksbury (b.8 Nov 1822-Kendal)
    - sp: John Littlewood (m.7 Jan 1847)
      - William Nelson Littlewood (b.1848-Liverpool)
      - Mary Ann Littlewood (b.1849-Scalithwaiterigg Kendal)
      - Alice Littlewood (b.1851-Salford)
      - Sarah Hannah Littlewood (b.1853-Scalithwaiterigg Kendal)
      - John Harry Littlewood (b.1854-York)
      - Robert Franklin Littlewood (b.1856-Doncaster)
      - Alfred Littlewood (b.1859-Kendal)
  - Jane Ducksbury (b.27 Feb 1824-Kendal,Westmorland,England;d.20 Feb 1849-Kendal,Westmorland,England)
  - Thomas Ducksbury (b.24 Nov 1825-Kendal)
    - sp: Jane Mitchell (b.1824;m.23 Nov 1845;d.1849-Kendal)
      - Sarah Ducksbury (b.16 Mar 1846-Kendal;d.Bef 1859)
      - Hannah Ducksbury (b.1848-Kendal)
        - sp: John Braithwaite (b.1850-Kendal;m.Mar 1873)
          - George Braithwaite (b.1876-Kendal)
            - sp: Eleanor Unsworth (b.1872-Kendal;m.1897)
              - Elizabeth Braithwaite (b.1899-Kendal)
              - John Braithwaite (b.1900-Kendal)
          - Thomas Duxberry Braithwaite (b.1880-Kendal;d.20 Feb 1883-Kendal)
    - sp: Elizabeth Shepherd (b.1815-Kendal;m.22 Sep 1850;d.Sep 1880-Keighley)
      - Alice Ducksbury (b.1851-Kendal;d.1852-Kendal)
      - Ann Ducksbury (b.1853-Kendal)



Ran the Milcrest Hotel in Glenridding

Lived at The Old Shambles and Far Cross Bank, Kendal before moving to Carlisle then onto Lancaster

# Descendants of William Ducksbury 1785

11 Oct 2009

Page 8

- Mary J Ducksbury (b.1854-Carlisle)
- Robert Ducksbury (b.1855-Carlisle;d.1896-Chenango County,NY,USA)
  - sp: Kate Duffey (b.1857-Sligo,Ireland;m.17 May 1879)
- Ellen Ducksbury (b.1856-Carlisle)
- James Ducksbury (b.1857-Carlisle)
  - sp: Elizabeth Sedgewick (b.1860;m.5 Aug 1882)
    - Elizabeth Ducksbury (b.Mar 1883-Keighley)
    - Cecilia Ducksbury (b.Sep 1883-Keighley)
    - Elizabeth Annie Ducksbury (b.Mar 1885-Keighley)
    - Frederick Ducksbury (b.Dec 1886-Keighley)
    - Samuel Ducksbury (b.Jun 1887-Keighley)
    - Florence Ducksbury (b.Mar 1891-Keighley)
    - Edith Ducksbury (b.1897-New Jersey)
    - Eugene Ducksbury (b.8 Nov 1897-New Jersey;d.2 Jan 1993-Patterson,NJ,USA)
    - Ruth Ducksbury (b.1902-New Jersey)
    - Ethel Ducksbury (b.1905-New Jersey)
- Sarah Ducksbury (b.5 Feb 1859-Carlisle)
  - sp: James Behan (m.7 Nov 1885)
    - Ambrose Behan
    - William Dennis Behan (b.13 Sep 1886-Bradford)
- John Ducksbury (b.4 Mar 1861-kendal;d.2 Feb 1932-Ashby de la Zouch)
  - sp: Eliza Jane Coates (b.12 Oct 1864-Pickering;m.23 Sep 1885;d.4 Feb 1935-Ashby de la Zouch)
    - Arthur Ducksbury (b.5 Apr 1886-Keighley;d.10 Jan 1893-Wakefield)
    - Margaret Elizabeth Ducksbury (b.29 Oct 1887-Keighley;d.11 Nov 1973-Lawrence,Mass)
      - sp: Arthur Shaw (b.28 Jun 1876-Almondbury;m.24 Nov 1909;d.2 Jan 1969-Lawrence,Mass)
        - Hannah Elizabeth Shaw (b.29 Dec 1910-Lawrence,MA,USA)
        - Louise Elvina Shaw (b.21 Dec 1912-Lawrence,MA,USA)
        - Harold Arthur Shaw (b.22 Jun 1914-Lawrence,MA,USA)
        - Alfred Edward Shaw (b.12 Jun 1916-Lawrence,MA,USA)
        - James Herbert Shaw (b.21 Jan 1918-Lawrence,MA,USA)
        - Edith Alice Shaw (b.24 Apr 1919)
        - Agnes Lillian Shaw (b.12 Sep 1923-Lawrence,MA,USA)
        - Alice Mary Shaw (b.12 Sep 1923-Lawrence,MA,USA)
        - Margaret Julia Shaw (b.23 Apr 1926-Lawrence,MA,USA)
        - Rita Marie Shaw (b.17 Mar 1930-Lawrence,MA,USA)
  - Ernest Augustus Ducksbury (b.1 Jan 1889-Keighley;d.5 Jan 1890-Keighley)
  - Henry Craven Ducksbury (b.30 May 1890;d.10 Jun 1891-Keighley)
  - Albert Edward Ducksbury (b.3 Sep 1891;d.Dec 1891-Keighley)
  - George Hedley Ducksbury (b.27 Aug 1892-Keighley)
    - sp: Sarah J Wardle (b.1891-Thringstone,Leics;m.27 Jun 1914)
      - Harold Joseph Ducksbury (b.28 Nov 1924;d.13 Sep 1985)
        - sp: Mavis Cox (m.25 Jun 1949)
          - Ann Ducksbury (b.4 Oct 1952-Coalville)
            - sp: Christopher Norman Dwyer (b.21 Nov 1951-Leeds;m.17 Aug 1974)
              - Sara Louise Dwyer (b.7 Aug 1979-Stockton-on-Tees)

Ducksbury's in Keighley :- . None of the keighley ones appear in 1901 census – did they go to USA ?????? There may also be 3 families there not 2 !

Moved to Burton upon Trent in the 1890's then to Coalville, Leicestershire, living there around the 1920's

Went to America from Coalville on the SS Celtic, arriving at Ellis Island on 22 August 1908. Margaret was traveling to visit a relative and was 5 foot 4 of dark complexion with brown hair and eyes. She was traveling with a Sarah Behan who resided in Karney USA but was born in Carlisle. Both of them gave John Ducksbury from coalville as their brother. Sarah was a widow by 1921 and had a son Ambrose Behan living at 30 Park St, Lawrence Mass, USA.

# Descendants of William Ducksbury 1785

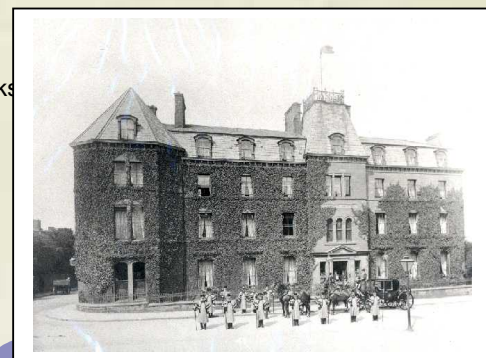
11 Oct 2009

Page 9



# Descendants of William Ducksbury 1785

- Henry W Ducksbury (b.Ab.1860)
- George Hedley Ducksbury (b.Ab.1862-Kendal;d.Sep 1920-Huddersfield)
  - sp: Kate Amelia Wallis (b.1861-Cambridge;m.Mar 1885;d.Mar 1929-Huddersfield,Yorks)
  - Gordon Hedley Ducksbury (b.29 May 1892-Market St,Lancaster)
    - sp: Christina Margaret Barlow (b.21 Feb 1893;m.1916;d.Jun 1986-Carlisle)
    - Murial Ducksbury (b.Dec 1917-Lancaster)
      - sp: Dakers (m.Mar 1942)
    - Eric Raymond Ducksbury (b.Oct 1919-Lancaster)
      - sp: Monica Augustin Gibson (m.Jun 1945)
      - Hilary Ducksbury
        - sp: Roger Blakemore
          - Peter Blakemore
      - Frances Ducksbury
        - sp: Peter Kippax
          - Stephen Kippax
          - Christine Teri Kippax
          - Simon Kippax
      - Paul Ducksbury
        - sp: Eileen Baston
          - Julian Paul Ducksbury
          - Helena Ducksbury (b.Aug 1980)
          - Thresa Ducksbury
      - Michael Ducksbury (d.Nov 2004)
        - sp: Samantha (m.2003)
          - Charlotte Ducksbury (b.Feb/Mar 2005)
      - Mark Ducksbury
        - sp: Samantha (m.2006)
          - Edward Ducksbury
      - Clare Marie Ducksbury (b.Jul 1957;d.11 Dec 2004-London,Ontario,Canada)
        - sp: Kenneth Robert Willard (m.21 Dec 1977)
          - Sabrina Kate Willard (b.Dec 1978)
            - sp: Andrew Reginald McIntyre (b.25 Jan 1979;m.15 Oct 2005)
          - Richard Kenneth Willard (b.Apr 1983)
          - Eric Thomas Gordon Willard (b.Apr 1996)
      - Anne Ducksbury
      - Beryl Ducksbury (b.Sep 1927-Newark)
      - Elsie Kathleen Ducksbury (b.Sep 1894-Hartlepool;d.Mar 1896-Hartlepool)
      - Florence Hilda Ducksbury (b.Sep 1894-Hartlepool;d.Jun 1904-Lancaster)
      - Harry Atkinson Ducksbury (b.Dec 1898-Hartlepool)
        - sp: Murial M Hadfield
          - April M Ducksbury (b.Jun 1932-Huddersfield)
            - sp: Charles Fawcett (b.2 Dec 1915-Waleska,Georgia,US;m.30 Mar 1991;d.Feb 2008-London)
          - Sally R Ducksbury (b.Jun 1934-Huddersfield)
      - Josiah Samuel Ducksbury (b.Mar 1864-Kendal;d.Mar 1916-Lancaster)
        - sp: Emily Annie Parkinson (b.1869-Lancaster;m.1891;d.Mar 1948)



Married in Cambridge, then by 1891 was running the Kings Arms Pub, Market Place, Lancaster. Then by 1901 the Victoria Road Grand Hotel, Hartlepool.

Manager of George Hotel in Huddersfield in 1914. He then served in the Royal Army Medical Corp (1914-15) and the 4th Battalion of the East Yorkshire Regiment (1915-1920). Medically retired around 1920 as a Captain.

Was running the Crown Hotel, Morecombe in 1893, the Kings Arms, Lancaster in 1895 and the Elms Hotel in Morecombe until around the 1920's.

# Descendants of William Ducksbury 1785



# Descendants of William Ducksbury 1785

11 Oct 2009

Page 12

sp: Katherina Crook (m.3 Jul 1895)

Joseph Nicholson (b.10 Jun 1863-Rochdale,Lancs)

sp: Elizabeth Barret

Henry Nicholson (b.20 May 1865-Huddesfield,Yorks;d.21 Jan 1958-Outwood nr Wakefield Yorks)

sp: Annie Briers (m.28 Aug 1886)

Robert Nelson Nicholson (b.1869/1870-Shipley,Yorks)

sp: Hannah Mary Place (m.9 Nov 1895;d.1896)

sp: Mary Ann Dillon (m.12 Feb 1898)

Alfred Nicholson (b.1872-Leeds)

Sarah Ellen Nicholson (b.1874-Leeds)

sp: Tom Mills (m.1895)

Evelyn M Mills (b.1896-Leeds)

Laura M Mills (b.1901-Leeds)

Minnie Nicholson (b.1877-Leeds)

sp: Coward (m.1898)

Henry Ducksbury (b.24 Dec 1838-Kendal;d.1839-Kendal,Westmorland,England)

Copyright